



Mar 01, 2016 18:02 GMT

## Special offers for solo travellers in 2016/17 with Fred. Olsen Cruise Lines

To make cruising with Fred. Olsen Cruise Lines even more attractive to solo travellers, the cruise line has introduced some great 'twin-for-sole occupancy' discounts. These special deals mean that a solo guest, occupying a twin cabin, will either pay no single-supplement or receive up to 50% off the supplement cost, depending on the selected cruise.

Nathan Philpot, Sales and Marketing Director for Fred. Olsen Cruise Lines, said:

“With 10% of all cabins in our fleet being dedicated to solo travellers, Fred. Olsen Cruise Lines has one of the highest proportions of dedicated accommodation for solos within the industry.”

Fred. Olsen is offering ‘twin-for-sole occupancy’ discounts for solo travellers on a range of cruise itineraries in 2016/17, including (subject to availability):

### ***Balmoral***

- 10-night L1613 **‘Britain’s Historic Sites & Scenic Delights’** cruise, ex Newcastle on 18<sup>th</sup> June 2016 – no single-supplement for an Inside cabin, ‘H’ Grade, or Outside cabin, ‘D’ and ‘B’ Grades (offer available until 31<sup>st</sup> March 2016). Prices start from £979 per person for an Inside cabin, ‘H’ Grade / from £1,229 per person for an Outside cabin, ‘D’ Grade
- 15-night L1622 **‘Portuguese Islands & Cities’** cruise, ex Dover on 12<sup>th</sup> September 2016 – no single-supplement for an Inside cabin, ‘H’ Grade, or Outside cabin, ‘D’ and ‘B’ Grades (offer available until 31<sup>st</sup> March 2016). Prices start from £1,599 per person for an Inside cabin, H’ Grade / from £1,969 per person for an Outside cabin, ‘D’ Grade
- 46-night L1703 **‘Central America & the Mardi Gras’** cruise, ex Southampton on 4<sup>th</sup> February 2017 – 50% discount off single-supplement for an Outside cabin, ‘E’, ‘D’ and ‘B’ Grades. Prices start from £4,999 per person for an Outside cabin, ‘E’ Grade

### ***Braemar***

- Seven-night M1612 **‘Historic Cities of France & Spain’** cruise, ex Southampton on 14<sup>th</sup> May 2016 – no single-supplement for an Outside cabin, ‘B’ Grade only (offer available until 31<sup>st</sup> March 2016). Prices start from £1,199 per person
- 11-night M1620 **‘The Great British Cruise’**, ex Southampton on 8<sup>th</sup> August 2016 – no single-supplement for an Inside cabin, ‘H’ Grade only (offer available until 31<sup>st</sup> March 2016). Prices start from £1,299 per person

- 14-night M1703 '**Amazon River Adventure**' adults-only fly-cruise, ex London Gatwick or Manchester on 2<sup>nd</sup> February 2017 – 75% discount off single-supplement for an Inside cabin, 'H' Grade, or Outside cabin, 'E', 'C' and 'B' Grades. Prices start from £1,499 per person for an Inside cabin, 'H' Grade, cruise only; or from £2,399 per person, flights included / from £1,899 per person for an Outside cabin, 'E' Grade, cruise only; or from £2,799 per person, flights included

### ***Boudicca***

- 10-night D1605 '**Land's End & John O'Groats**' cruise, ex Falmouth on 24<sup>th</sup> April 2016 – 50% discount off single-supplement for an Outside cabin, 'E', 'D' and 'B' Grades. Prices start from £1,099 per person for an Outside cabin, 'E' Grade
- Eight-night D1619 '**French & Spanish Escape**' cruise, ex Liverpool on 30<sup>th</sup> September 2016 – no single-supplement for an Outside cabin, 'D' Grade only (offer available until 31<sup>st</sup> March 2016). Prices start from £1,039 per person
- Three-night D1701 '**Dublin Short Break**' mini-cruise, ex Liverpool on 5<sup>th</sup> January 2017 – no single-supplement for an Outside cabin, 'E', 'D' and 'B' Grades (offer available until 31<sup>st</sup> March 2016). Prices start from £229 per person for an Outside cabin, 'E' Grade

### ***Black Watch***

- 13-night W1608 '**The Azores & Madeira**' adults-only cruise, ex Dover on 25<sup>th</sup> June 2016 – 50% discount off single-supplement for an Outside cabin, 'E', 'D' and 'B' Grades. Prices start from £1,649 per person for an Outside cabin, 'E' Grade
- Two-night W1619 '**Mystery Mini-Cruise**', ex Harwich on 29<sup>th</sup> October 2016 – no single-supplement for an Outside cabin, 'E', 'D' and 'B' Grades (offer available until 31<sup>st</sup> March 2016). Prices start from £199 per person for an Outside cabin, 'E' Grade
- 107-night W1702 '**Around the World**' 'Grand Voyage', ex Southampton on 3<sup>rd</sup> January 2017 – 50% discount off single-supplement for an Outside cabin, 'D' Grade only. Prices start from £12,999 per person

All prices include accommodation, all meals and entertainment on board, and port taxes.

For those solo cruisers who prefer to occupy a single cabin, Fred. Olsen has a number of cabin options available on each of its four ships, covering all grades, from 'Single Inside' and 'Single Outside' cabins, to 'Single Balcony Suites'. Overall, the Fred. Olsen fleet has 190 single cabins; *Braemar* offers 40 such cabins, *Black Watch* and *Boudicca* each have 43, and *Balmoral* has 64.

Once on board a Fred. Olsen ship, solo travellers will find exclusive gatherings for them to get to know each other, and staff on board will seat them together for dinner, and arrange companions for solo travellers when going ashore, if required. There are also Gentleman Hosts and Dance Couples on board the ships to provide dancing partners for solo guests.

The relatively small size of Fred. Olsen's fleet of ships – *Balmoral*, *Braemar*, *Boudicca* and *Black Watch* – and the relaxed and friendly atmosphere on board make Fred. Olsen cruises especially attractive for those travelling alone.

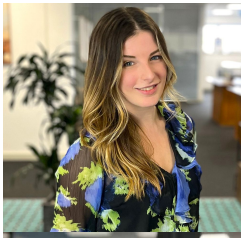
Fred. Olsen is delighted to be named a 'Gold Trusted Merchant' by independent review site Feefo in 2016, for the third year in a row. This accreditation is based on genuine customer feedback and, to date, Fred. Olsen has received over 14,300 reviews, with 95% of these being in the 'Good' or 'Excellent' categories.

**For further information on Fred. Olsen Cruise Lines, visit the website at [www.fredolsencruises.com](http://www.fredolsencruises.com) Book online, call Reservations on 0800 0355 242 (Monday to Friday, 8am to 8pm; Saturday, 9am to 5pm; Sunday, 10am to 4pm), or visit an ABTA travel agent.**

---

Fred. Olsen Cruise Line operates in the UK with four intimately sized ships for a more personal cruising experience.

## Contacts



### **Georgina May**

Press Contact

PR Manager

[georgina.may@fredolsen.co.uk](mailto:georgina.may@fredolsen.co.uk)



### **Georgie Long**

Press Contact

PR Executive

[georgie.long@fredolsen.co.uk](mailto:georgie.long@fredolsen.co.uk)