



Aug 07, 2015 14:49 BST

Take a convenient cruise from Newcastle to a variety of stunning destinations with Fred. Olsen Cruise Lines

Newcastle is a great starting point for a Fred. Olsen cruise, thanks to its excellent road and rail connections and the large, comfortable passenger lounge at the Port of Tyne's Cruise Terminal. With an extensive range of exciting sailings departing in 2015, and prices starting from just **£67 per person, per night**, guests in the North East will be sure to find a Fred. Olsen cruise that is just right for them, from 'right on their doorstep'!

Fred. Olsen is currently undertaking a multi-media promotional campaign in and around Newcastle to support its 2015 cruise season and the exceptional

value that its holidays offer to guests in the North East. The campaign features advertisements on ITV Tyne Tees and regional radio stations, as well as prominent poster advertising in towns close to the Port of Tyne, and regional press promotions.

Examples of Fred. Olsen's great-value sailings in 2015 include:

- ***Boudicca's* 15-night D1523 'Landscapes of Portugal & the Canaries' cruise, departing on 17th October 2015.** Prices from just £999 per person.

This fantastic 15-night *Boudicca* cruise offers a diverse array of contrasting sights and experiences, taking in the sun-drenched Canaries, Madeira and two bustling Portuguese cities.

During *Boudicca's* stay in the vibrant Portuguese capital of **Lisbon** – the first port of call – there is plenty for guests to see and do. Climb aboard the tram and see the city's impressive palaces, castles and bridges; or take the weight off your feet in charming Art-Nouveau cafés and treat yourself in the Iberian Peninsula's largest shopping mall.

In **Arrecife**, Lanzarote, make the most of the island's almost-endless sunshine and ride a camel deep into the stunning Timanfaya National Park to see the incredible 'hissing rocks' of the Fire Mountains.

From **Santa Cruz** – the capital of Tenerife – join tours to explore the island's incredible volcanic landscapes, visit the mystical Pyramids of Guimar and admire the views from the peak of Mount Teide – Spain's highest mountain.

Boudicca's final day in the Canaries will be spent on the charming island of La Palma, where a visit to the capital, **Santa Cruz**, brings spectacular landscapes, and an abundance of stunning flora awaits exploration.

The cruise then returns to Portuguese shores; stimulate your senses in fragrant **Funchal**, the capital of Madeira, and **Oporto** – a city famed for its delicious port wines – on tours from **Leixoes**. *Boudicca* returns to **Newcastle**.

- ***Boudicca's* 16-night D1524 'Seductive Spain and Portugal' cruise, departing**

on **1st November 2015**. Prices from just £1,189 per person.

Join *Boudicca* on this spectacular 16-night cruise, taking in stunning destinations in mysterious Morocco and seductive Spain, as well as Portugal and Algeria.

Boudicca's first call is to **La Coruna**, in Spain, which boasts an eclectic mix of architectural styles. Be sure to visit the Tower of Hercules – the world's oldest lighthouse – and journey to the unmissable Santiago de Compostela Cathedral.

In **Cadiz**, also in Spain, guests can soak up the sunshine on Andalusia's gorgeous Atlantic Coast, or join a tour to stunning Seville to admire the wonderful mix of grand boulevards, narrow streets, cobbled alleys and pretty squares.

Boudicca leaves Spain behind, and heads to the beguiling Algerian capital, **Algiers**. Built close to the Mediterranean coast, guests can seek out the remains of the citadel, ancient mosque and palaces in the Old Quarter.

Next comes, **Melilla**, in Spanish Morocco. Home to over 900 Modernist structures – only Barcelona has more – this multicultural city is a joy to explore.

Gibraltar, with its famous Barbary Apes, is a 'must see', before the cruise visits cosmopolitan **Casablanca**, Morocco, for a day-long stay. Here, guests will have the chance to immerse themselves in the exotic Arabic culture. Discover the Hassan II – the world's largest mosque – and Rick's Café, which is designed to look like the famous bar in the classic movie, *Casablanca*.

Boudicca makes a final call into **Leixoes**, for tours to **Oporto**, with its spectacular Douro River, before returning to **Newcastle**.

All prices are based on two adults sharing a twin-bedded Inside cabin, and include accommodation, all meals and entertainment on board, plus port taxes.

Guests can also choose to upgrade to Fred. Olsen's 'all-inclusive' package on selected drinks from just £10 per person, per night.

Fred. Olsen's 880-guest *Boudicca* will be offering a total of eight cruises from the Port of Tyne during her 2015 Newcastle cruise season, which began on 26th July 2015 and will continue until 1st November 2015.

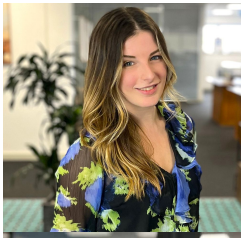
Fred. Olsen will also be increasing its commitment to sailing from Newcastle in 2016. The cruise line has made the strategic decision to base its 1,350-guest flagship, *Balmoral*, at the Port of Tyne from May to August 2016, and will be offering 11 enticing sailings to guests in the North East – more than ever before! – on itineraries ranging from the spellbinding fjords of Norway, to the sun-kissed beaches of the Canaries and 'Gems of the Baltic'.

Fred. Olsen is pleased to have been awarded the 'Gold Trusted Merchant' status by independent review site Feefo in 2015, for the second year in a row. This accreditation is based on genuine customer feedback and, to date, Fred. Olsen has received over 11,000 reviews, with 95% of these being in the 'Good' or 'Excellent' categories.

For further information on Fred. Olsen Cruise Lines, visit the website at www.fredolsencruises.com Book online, call Reservations on 0800 0355 242 (Monday – Friday, 8am – 8pm; Saturday, 9am – 5pm; Sunday, 10am – 4pm), or visit an ABTA travel agent.

Fred. Olsen Cruise Line operates in the UK with four intimately sized ships for a more personal cruising experience.

Contacts



Georgina May

Press Contact

PR Manager

georgina.may@fredolsen.co.uk



Georgie Long

Press Contact

PR Executive

georgie.long@fredolsen.co.uk