



Apr 17, 2013 11:22 BST

Cruise the world with Fred. Olsen Cruise Lines' inspirational 'Grand Voyages 2015' – visit 82 ports in 40 countries!

Fred. Olsen Cruise Lines is launching two new exhilarating 'Grand Voyages' in 2015; Balmoral's 119-night L1501 'Exploring the Far East' cruise, departing from Southampton on 4th January 2015 – the cruise line's longest-ever sailing – and Black Watch's W1501 73-night 'South American Discovery' cruise, departing from Southampton on 6th January 2015. Together, these two epic cruises will take in 82 ports in 40 countries.

There will be an impressive 13 maiden calls on Balmoral's 'Grand Voyage' in 2015: Galle (Sri Lanka), Ujung Pandang ('Makassar', Indonesia), Naha

(Okinawa, Japan), Tokyo (Japan), Nagasaki (Japan), Jeju City (Jeju Island, South Korea), Dalian (China), Nha Trang (Vietnam), Nathon (Koh Samui, Thailand), Malacca (Malaysia), Hambantota (Sri Lanka), Utheemu (North Thiladhunmathee Atoll, Maldives) and Uligamu (Ihavandhippolhu Atoll, Maldives).

Nathan Philpot, Sales and Marketing Director for Fred. Olsen Cruise Lines, said:

“We are thrilled to be unveiling our ‘Grand Voyages’ for 2015, and in particular our stunning ‘Exploring the Far East’ cruise aboard our flagship Balmoral, which is seven days longer than in 2013, but with 19 more ports, and all at just £84 per night! This has been designed specifically to be a modular cruise, allowing guests to do shorter sections, and a first for Fred. Olsen is that half the time is spent cruising and the other half is spent actually in the destinations. With these very special ‘Grand Voyages’ in 2015, there is something for every kind of Fred. Olsen cruiser, and we are delighted to be able to offer our guests the most cost-effective way to take in even more destinations and experiences around the world, on our smaller, more intimate ships.”

Balmoral's 119-night ‘Exploring the Far East’ ‘Grand Voyage’, L1501, ex Southampton on 4th January 2015

As well as the whole cruise, guests will be able to choose from eight shorter fly-cruise sectors: ‘A Voyage to Egypt’ (13 nights); ‘Embark for the Emirates’ (11 nights); ‘India & the Andaman Sea’ (17 nights); ‘Indonesia & Okinawa’ (15 nights); ‘China & Japan’ (15 nights); ‘Vietnam & the Gulf of Thailand’ (14 nights); ‘The Indian Ocean’ (19 nights); and ‘The Eastern Mediterranean’ (15 nights).

Balmoral travels east via Malaga (Spain), Catania (Sicily), and Port Said (Egypt), before taking in the dramatic Suez Canal in a daylight transit. The cruise then continues to Safage and Sharm el-Sheikh in Egypt, Aqaba (Jordan), Muscat (Oman), and the United Arab Emirates’ Fujairah, Abu Dhabi and Dubai, before visiting the Indian ports of Mumbai (formerly Bombay) and Cochin, Galle in Sri Lanka and Port Blair in the Andaman Islands.

Balmoral then makes an overnight stop in Yangon, or ‘Rangoon’, the capital of Myanmar (formerly Burma), and continues to Port Klang (Malaysia, for Kuala Lumpur), Semarang (Indonesia), capital of Java, and Komodo Island –

where the ferocious-looking Dragons are a sight to behold! Ujung Pandang (or 'Makassar', Indonesia) is the next port of call, followed by Cebu in the Philippines, which will have a special resonance for Fred. Olsen's predominantly Filipino crew, before Balmoral takes in the Japanese ports of Naha (Okinawa), Tokyo, Kobe (Osaka) and Nagasaki, with a scenic cruise of the Ryukyu Islands.

Fascinating to the cruise adventurer will be Balmoral's next calls in South Korea – Jeju City on Jeju Island and Incheon (for Seoul), followed by China's Tianjin Xingang (for Beijing) – with an overnight stay – Dalian and Shanghai, the country's most populous city. Next stop, Hong Kong, is undoubtedly one of the cruise highlights, with its iconic skyscrapers and famous harbour. Balmoral then calls at Chan May in Vietnam, for visits to the UNESCO-recognised city of Hué, Nha Trang and Ho Chi Minh City (formerly Saigon) – a popular maiden call for Fred. Olsen in 2013 – where there is an overnight stay.

The cruise continues to Sihanoukville in Cambodia, and Laem Chabang (for Bangkok), for an overnight stay, then Nathon (Koh Samui) in Thailand, before reaching that city of colonial splendour, Singapore, where there is another stopover. Malacca and Georgetown (Penang) in Malaysia follow, before Balmoral arrives in Phuket (Thailand), and continues to Hambantota and Colombo in Sri Lanka.

The Maldives is the next destination, with inaugural calls at Utheemu (North Thiladhunmathee Atoll), for an overnight stay, and Uligamu (Ihavandhippolhu Atoll), before heading to Salalah in Oman. Balmoral then makes a return visit to Sharm el-Sheikh – for an overnight stay – and continues to Alexandria, with an enthralling daylight transit of the Suez Canal, Piraeus (for Athens, Greece) and Valletta, capital of Malta.

Balmoral then calls at Algiers (Algeria), Cartagena (Spain) and Lisbon (Portugal), before arriving back in Southampton.

Black Watch's 73-night 'South American Discovery', W1501, ex Southampton on 6th January 2015

2015 sees the return of Fred. Olsen's much-favoured South American 'Grand Voyage', and this Black Watch cruise will be sure to offer guests a real feast for the senses.

Squeezed between the '2014 FIFA World Cup Brazil' and 2016 Olympic Games in Rio, this exotic longer cruise calls first at Funchal on the 'Garden Isle' of Madeira, then sunny Santa Cruz de Tenerife (Canary Islands) and Mindelo (Portugal), before reaching South America.

First stop on this amazing and diverse continent is Rio Janeiro (Brazil), for an overnight stay, to enable guests to make the most of this vibrant city, then Ilhabela (Brazil), Montevideo – capital of Uruguay – and an overnight stay in Buenos Aires (Argentina), known as the 'Paris of South America'. Next are the Argentinean ports of Puerto Madryn and Ushuaia, before Black Watch arrives at the pilot station at Puerto Williams (Chile) and rounds legendary Cape Horn.

Punta Arenas is the next port of call, followed by a cruise of the spectacular Chilean Fjords. Black Watch then continues to Chile's Puerto Chacabuco, located at the head of Aisén Fjord, and the port city of Puerto Montt, and through to Valparaíso. Next comes the romantically-named Robinson Crusoe Island, followed by Peru's General San Martín, named after the South American liberator General José de San, Salaverry and Manta (Ecuador), before a daylight transit of the Panama Canal, which is an experience not to be missed.

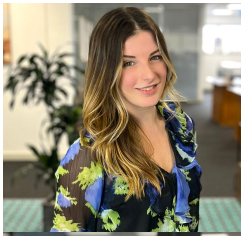
At the end of the awesome Panama Canal comes Colon, followed by Cartagena de Indias in Colombia, before the sunshine Caribbean destinations of Willemstad (Curacao), Bridgetown (Barbados), Castries (St. Lucia), St. John's and Philipsburg (St. Maarten).

Black Watch makes a final call at Ponta Delgada in the Azores, before arriving back in Southampton.

The Fred. Olsen Cruise Lines' 'Launch Brochure' for the new 2014/15 itineraries will be unveiled in the week commencing 22nd April 2013, to go on general sale from 24th April 2013.

Fred. Olsen Cruise Line operates in the UK with four intimately sized ships for a more personal cruising experience.

Contacts



Georgina May

Press Contact

PR Manager

georgina.may@fredolsen.co.uk



Georgie Long

Press Contact

PR Executive

georgie.long@fredolsen.co.uk