



Nov 17, 2015 16:38 GMT

## Fred. Olsen Cruise Lines' Boudicca to undergo refurbishment at Bremerhaven's Lloyd Werft in November 2015

Fred. Olsen Cruise Lines' 880-guest *Boudicca* will be entering dry dock at the Lloyd Werft shipyard in Bremerhaven, Germany in November 2015, in preparation for the forthcoming 2016/17 cruise season.

*Boudicca* will arrive in Bremerhaven on 18<sup>th</sup> November 2015 from the Port of Tyne, Newcastle, following a 16-night 'Mysterious Morocco & Seductive Spain' cruise, and will undergo various engineering works, general refurbishment and interior / exterior painting.

During the dry dock, *Boudicca* will also see 28 cabins on Lido Deck 7 fitted with terrace balconies. These new terrace balcony cabins will extend out 1.2 metres from the ship's bulkhead, and will provide guests with an increased choice of cost-effective balcony cabins, with access to the outside.

Mike Rodwell, Managing Director of Fred. Olsen Cruise Lines, said:

"We experience extremely high demand for balcony cabins across our fleet, in particular on a smaller-sized ship such as *Boudicca*, and our new terrace balcony cabins are an innovative response to this.

"We installed the new terrace balcony cabins on sister ship *Black Watch* during her dry dock last Autumn, and these have proved very popular with our guests."

Following her dry dock, *Boudicca* will commence her cruise season from the South Essex port of Tilbury, with a 14-night 'Landscapes of Morocco, Madeira & the Canaries' voyage, departing on 30<sup>th</sup> November 2015.

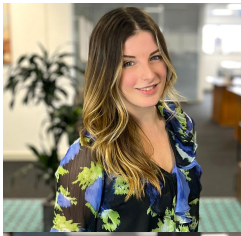
During the 2016/17 cruise season, Fred. Olsen's fleet of four ships – *Balmoral*, *Braemar*, *Boudicca* and *Black Watch* – will be visiting a record 253 destinations in 84 countries around the globe.

**For further information on Fred. Olsen Cruise Lines, visit the website at [www.fredolsencruises.com](http://www.fredolsencruises.com) To find out more about Lloyd Werft Bremerhaven, go to [www.lloydwerft.com](http://www.lloydwerft.com)**

---

Fred. Olsen Cruise Line operates in the UK with four intimately sized ships for a more personal cruising experience.

## Contacts



### **Georgina May**

Press Contact

PR Manager

[georgina.may@fredolsen.co.uk](mailto:georgina.may@fredolsen.co.uk)



### **Georgie Long**

Press Contact

PR Executive

[georgie.long@fredolsen.co.uk](mailto:georgie.long@fredolsen.co.uk)